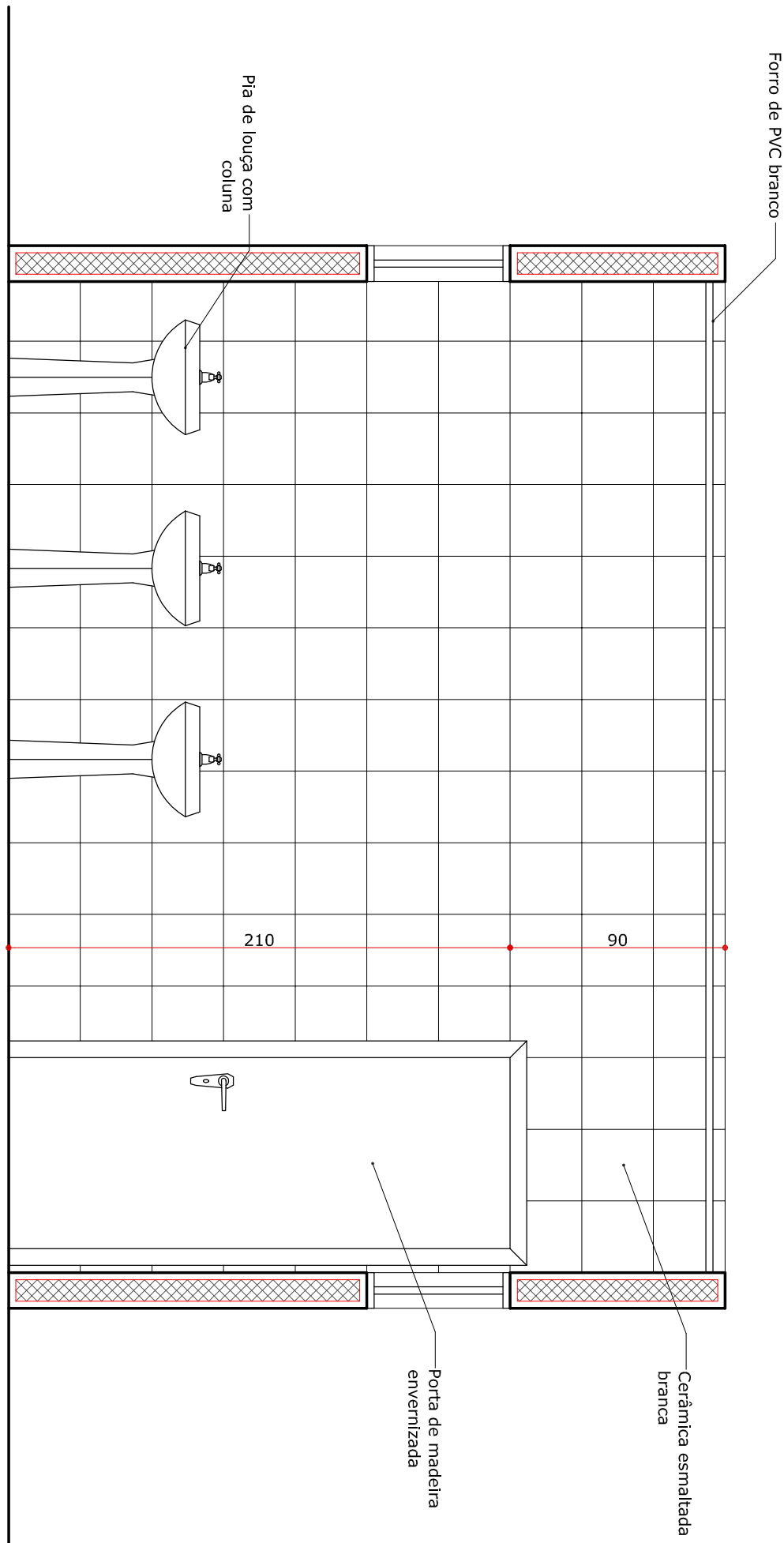
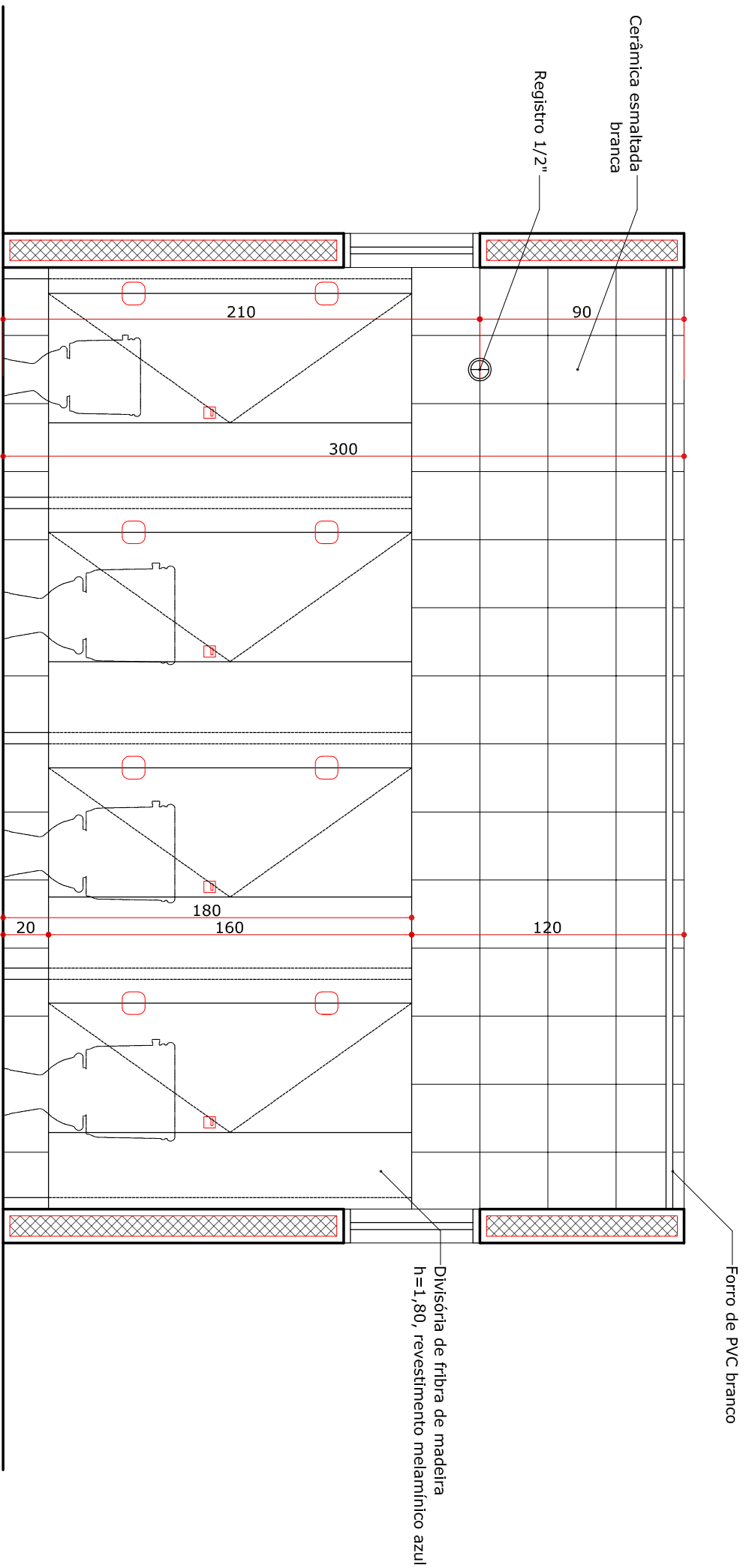


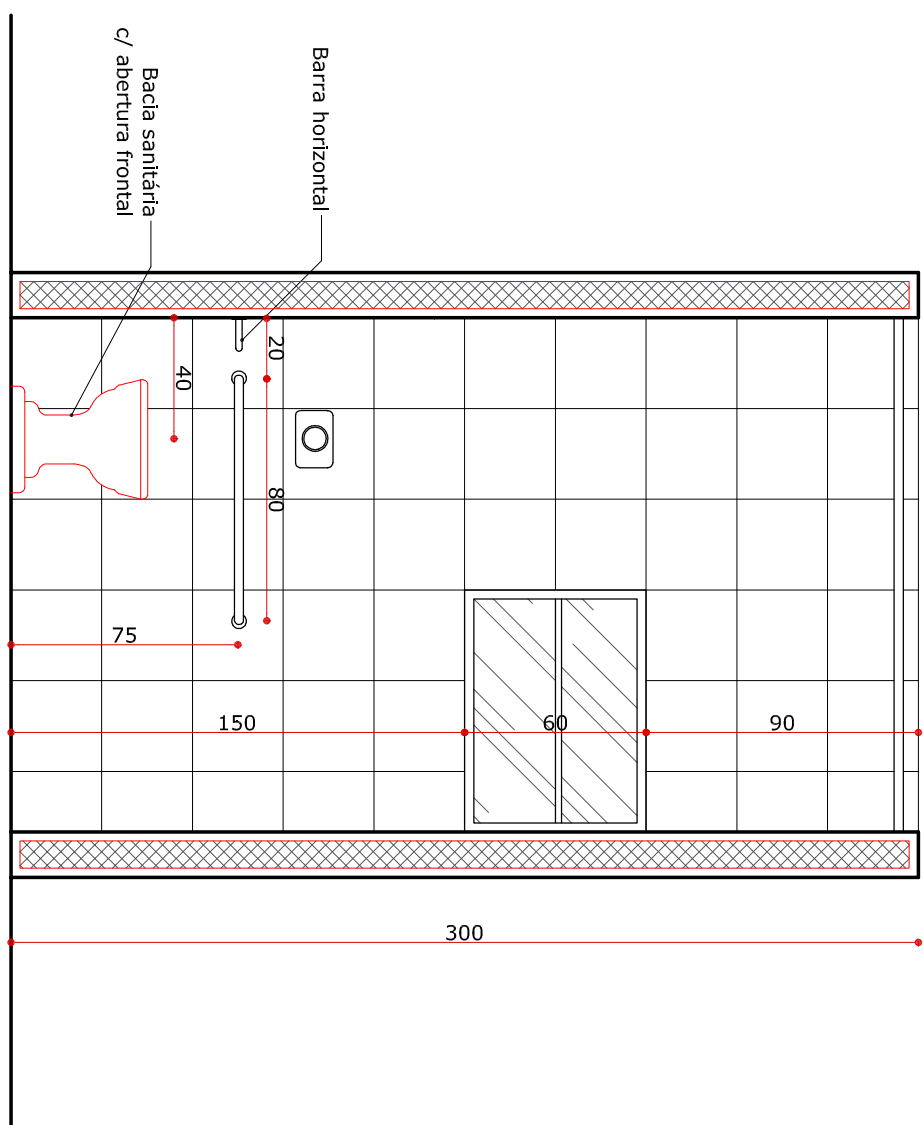
PLANTA
ESCALA 1:25



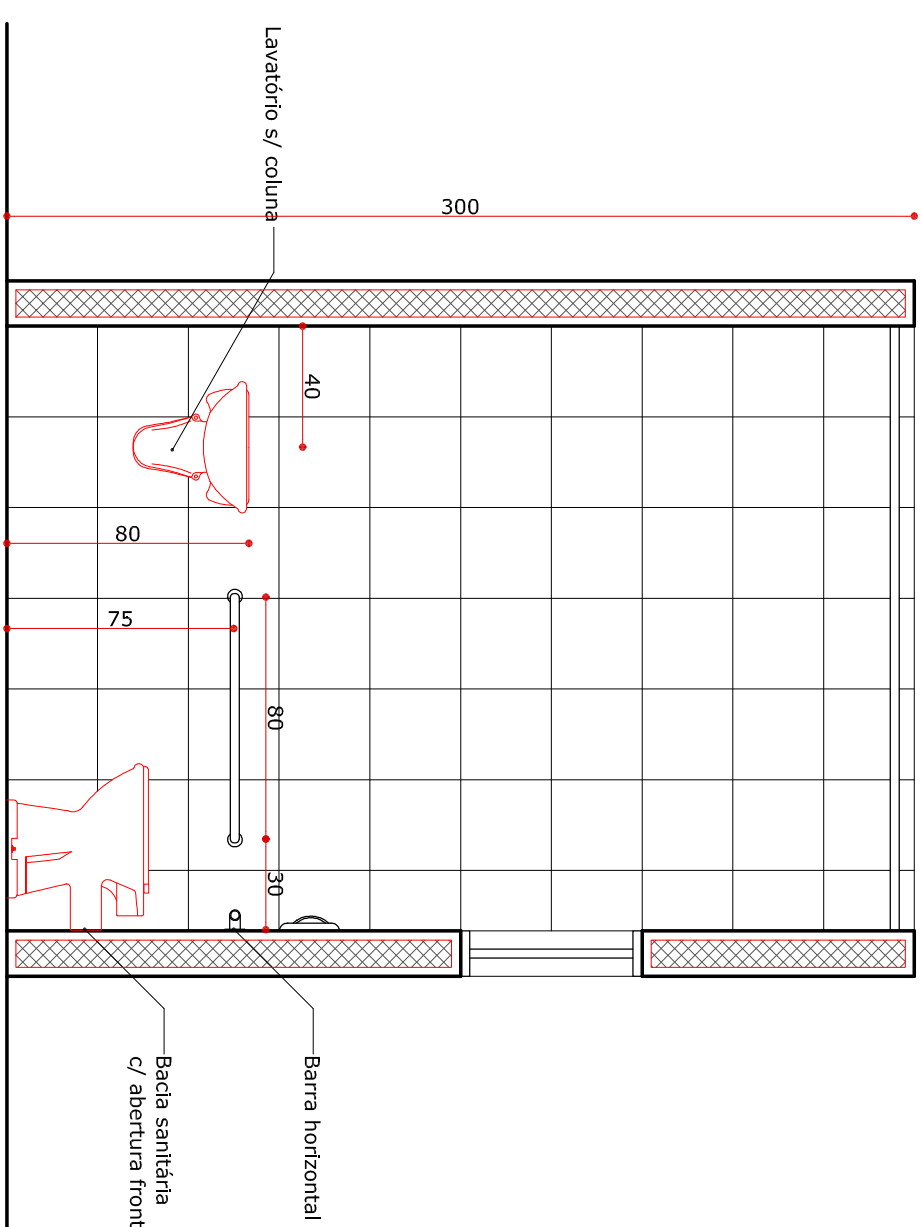
ELEVACÃO 02
ESCALA 1:25



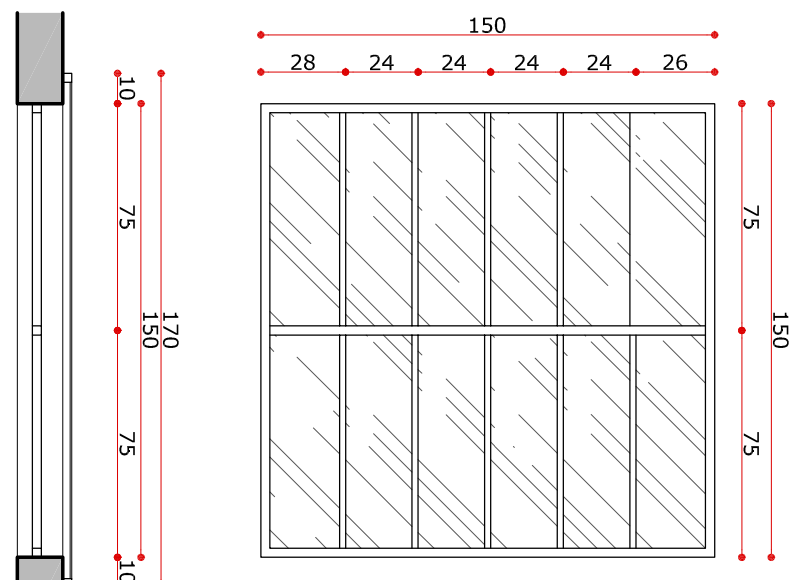
ELEVACÃO 01
ESCALA 1:25



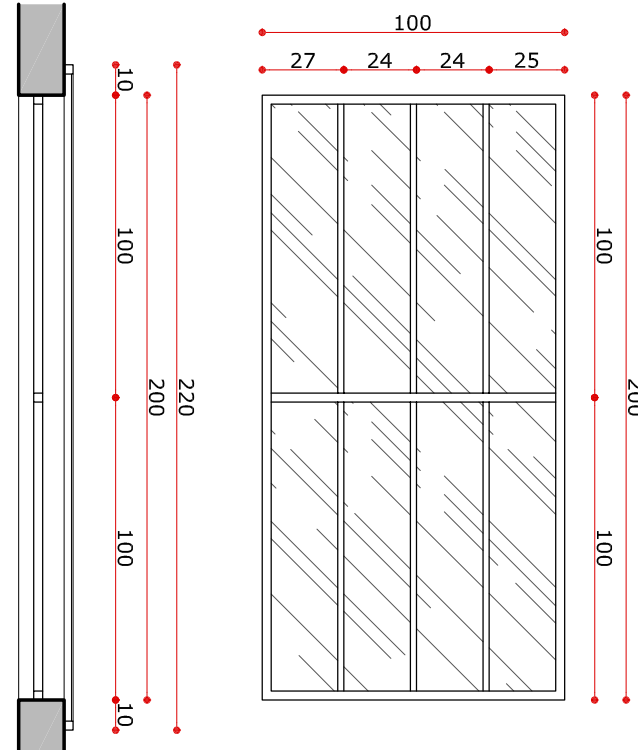
ELEVACÃO 04
ESCALA 1:25



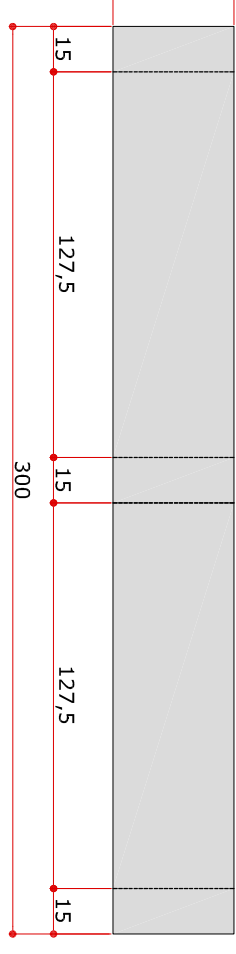
ELEVACÃO 03
ESCALA 1:25



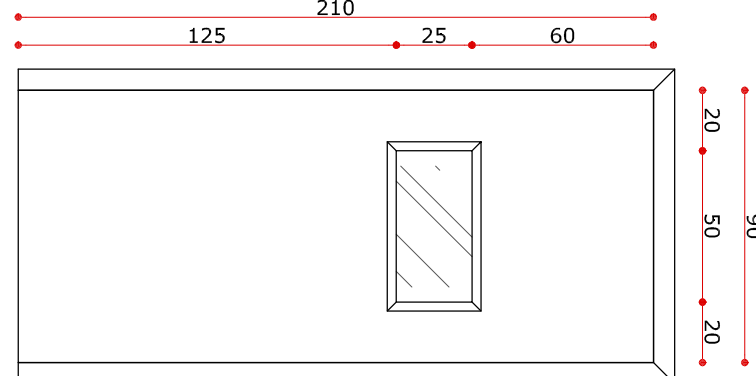
JANELA J01
150X150 petíonli 60



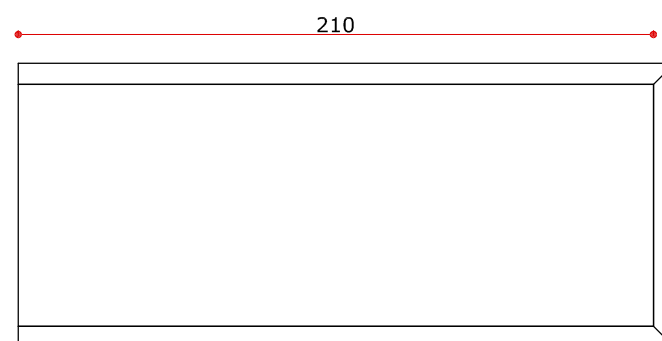
JANELA J02
200X100 petíonli 110



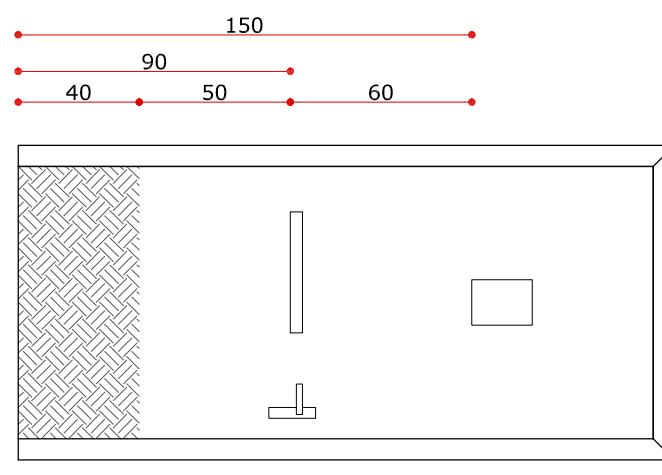
BANCO DE CONCRETO E ALVENARIA
ESCALA 1:25



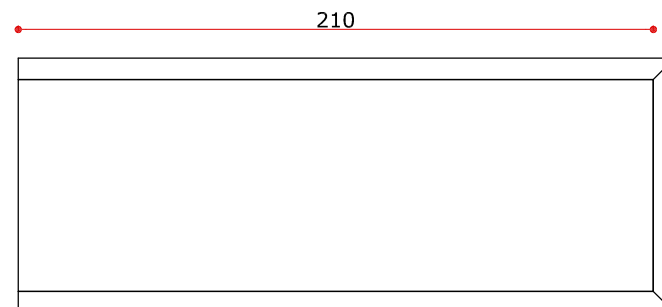
PORTA P01
90X210



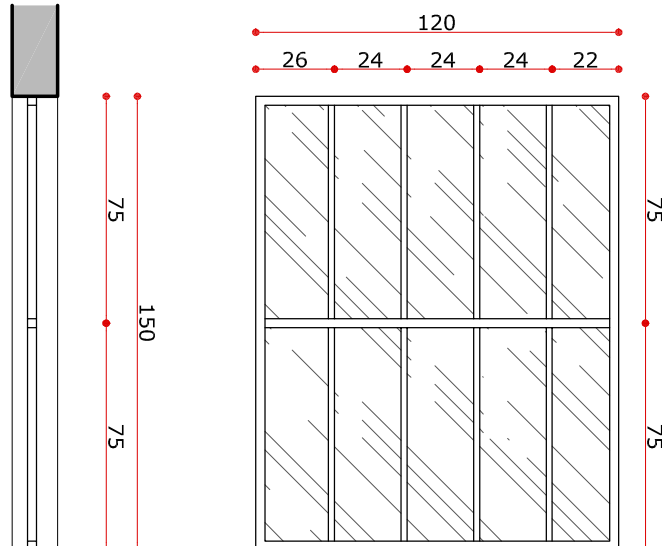
PORTA P02
80X210



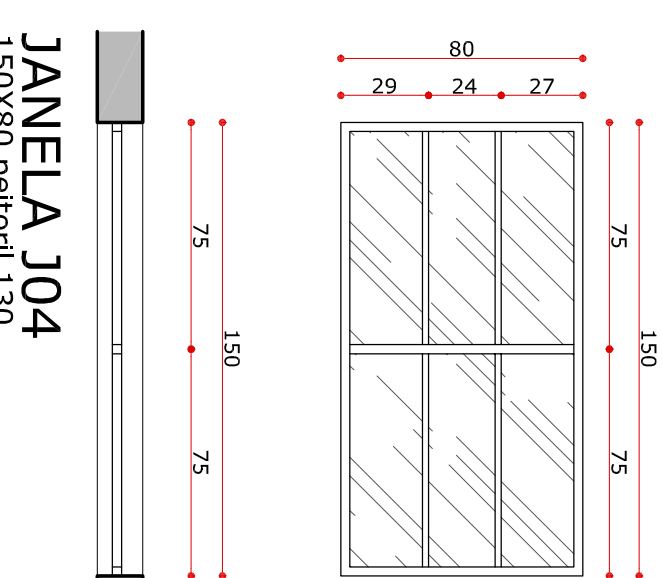
PORTA P03
90X210



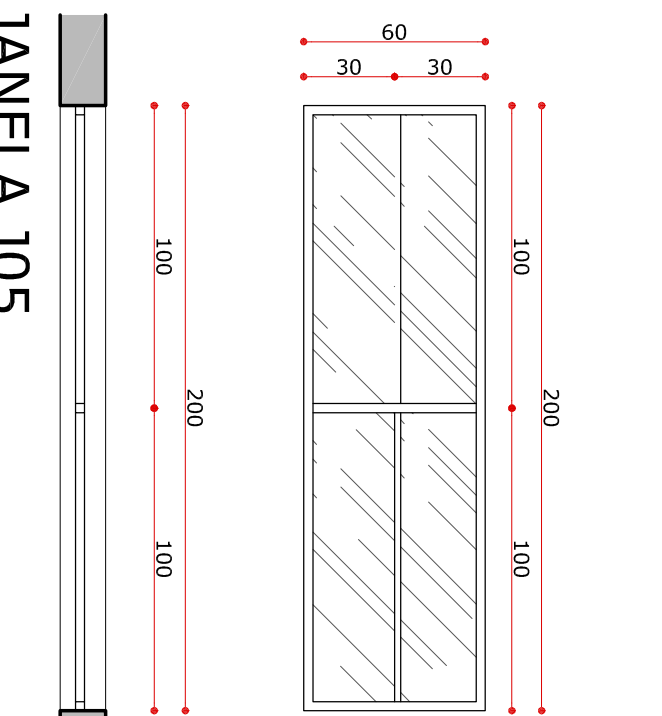
PORTA P04
70X210



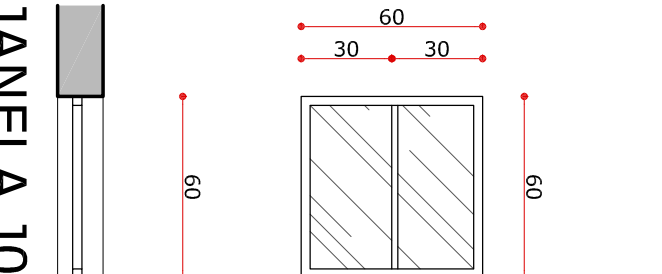
JANELA J03
150X120 petíonli 90



JANELA J04
150X80 petíonli 130
com tela mosquiteiro, 02 unidades na despensa



JANELA J05
200X60 petíonli 150



JANELA J06
200X60 petíonli 150

PROJETO ARQUITETÔNICO PARA CONSTRUÇÃO DO PRÉDIO 04 ESCOLA RURAL MUNICIPAL NOSSA SENHORA DAS GRAÇAS	
PRANCHIA 04/06	
PROPRIETÁRIO: PREFEITURA MUNICIPAL DE CARAVELAS - PR PREFEITO CARLOS SÁBIO SILVA FONTE: DE ALVENARIA JANELAS DE ALUMÍNIO	RESPONSÁVEL TÉCNICO: Arq. Ana Elisa Gori Camargo CAU 067406-0
AUTOR DO PROJETO: Arq. Ana Elisa Gori Camargo	
D T A JULHO/2014 PRÉDIO 04	
DESIGNO Ana Gori Teléfono: (041) 3025 1112 - 99171268	
End.: Av. João Franco n.º 400 Centro - Caravelas/PR Teléfono: (041) 3025 1112 - 99171268	